

Village of Bartlett Downtown TOD Plan

Project Overview

The Village of Bartlett received a grant through the Community Planning Program of the Regional Transportation Authority (RTA) to fund the creation of a Downtown Transit Oriented Development (TOD) Plan for the Metra station area.

The year long Village of Bartlett Downtown TOD Plan process was guided by a Steering Committee comprised of Downtown residents, business owners, and Village leaders. At key milestones in the process, the community participated in public workshops to discuss and provide comments on the plan components. After a thorough review process, the TOD Plan was adopted by the Village Board of Trustees on October 18, 2016. The full plan document can be found at www.bartlettdowntowntod.com

Study Area

The study area for the TOD Plan was focused on the walkable district surrounding the Metra station which includes Bartlett's core Downtown retail and residential zone, as well as schools, professional offices, major employers, and park spaces and is bounded by Western Avenue, North Avenue, South Prospect Avenue and West Devon Avenue.



Community Engagement

The TOD planning process included many opportunities for residents, business owners, and other stakeholders to be involved in decision making. Downtown businesses were invited to focus group discussions early in the process to help the planning team understand local challenges and opportunities. Additionally, three Village-wide public workshops were held at project milestones to give the public an opportunity to view key elements of the Plan, and discuss comments with the planning team. A project website, linked to the Village's existing website and social media pages, was continuously updated throughout the planning process, to keep everyone informed of planning goals, recommendations, and meeting dates.

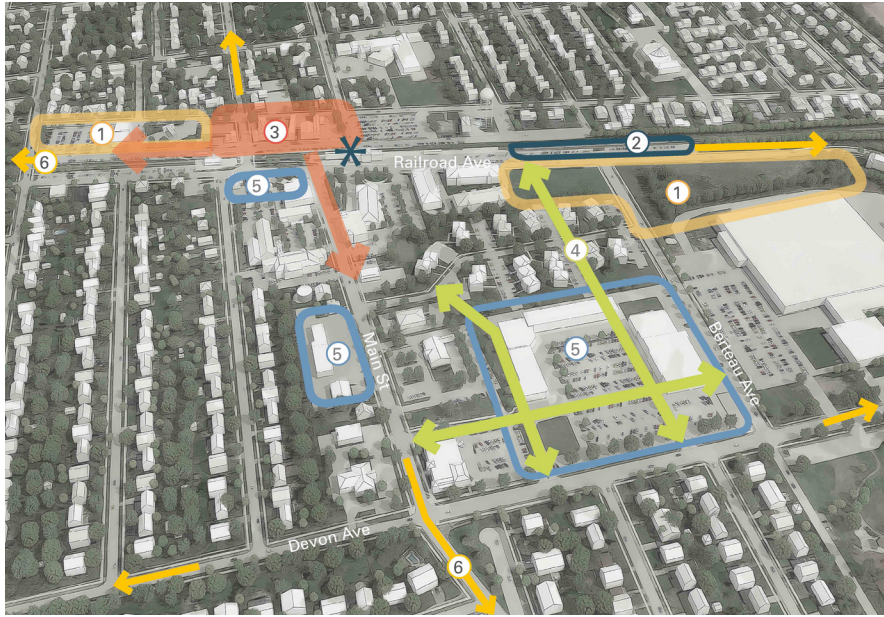


Key Goals of the TOD Plan

- Foster a greater sense of community pride and vibrancy in Downtown Bartlett
- Increase economic development throughout the Downtown area
- Provide a mixed-use environment, with more residential options, a variety of commercial businesses, and jobs within the Village
- Expand the local tax base to support future infrastructure improvements
- Encourage commuters to use Metra to help reduce traffic congestion and air pollution
- Maintain and enhance the appearance of the Downtown to provide a stronger sense of place
- Advance sustainability and public health goals through the promotion of a compact, walkable community

Village of Bartlett Downtown TOD Plan

Key Planning Recommendations



TOD Plan Outline

01 INTRODUCTION: Project introduction, Plan Goals, Study Area Overview, Public Input Overview, Overall TOD Planning Strategies

02 REAL ESTATE MARKET ANALYSIS OVERVIEW: Methodology Overview, Residential Market Conclusions, Commercial Market Conclusions

03 TRANSPORTATION & CONNECTIVITY OVERVIEW: Overall Transportation Recommendations, Bike Recommendations, Streetscape Analysis

04 DOWNTOWN REVITALIZATION RECOMMENDATIONS: Downtown Management & Collaboration, Downtown Revitalization Strategies, Events & Activities, Marketing & Signage

05 DEVELOPMENT & PUBLIC REALM RECOMMENDATIONS: Opportunity Sites Overview, Concepts Overview, Opportunity Site Development Strategies

06 IMPLEMENTATION STRATEGIES: Development Phasing Strategy, Action Check List

1 Increase the Downtown residential population by focusing on new housing development to fuel commercial growth.

3 Reinforce Bartlett Avenue as the historic retail center of Downtown and extend the character of the street to the west.

5 Revitalize older retail properties to enhance the marketing and visual appeal of existing businesses.

2 Redistribute Metra parking to both accommodate future commuter needs and allow for new development on key Downtown sites.

4 Improve traffic and pedestrian connectivity Downtown by re-establishing street grid south of the railroad tracks.

6 Improve bike and pedestrian connections from surrounding residential neighborhoods to Downtown.

Concepts for the Future of Downtown

